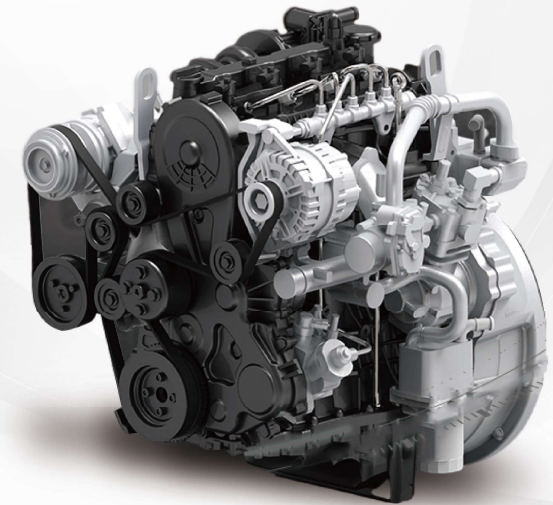




SINTEC

Cummins



CONTACT US

2024

Sintecauto.COM (GEELY,CHERY,GREAT WALL, ISUZU,MG, FORD TRANSIT,RANGER, EVER-
EST,FOCUS,FIESTA,ECOSPORT,-MONDEO,TERRITORY...)

SINTEC AUTO PARTS CO.,LTD
Brand/Excellence/Focus/Navigation/Future

WWW.Sintecauto.com



ABOUT US

Sintecauto.com established in 2014, specialized in exporting JMC/-FORD/GEELY/MG/ISUZU DMAX-IVECO/CUMMINS whole series parts.

Our company located in Nanchang city, Jiangxi Province, where is one of the biggest commercial auto manufacturing base, producing ISUZU/FORD/JMC vehicles. that is why we could offer the first hand original parts with competitive price in a short time.

We pay attention to the quality of the parts we offered, relying on complete supply chain and QC , our products are welcome in international market, got good comments from our customers. We insist on the policy of striving for perfection, pursuing super excellent, look forward to the sincere cooperation with clients.

CONTENTS

ENGINE SYSTEM

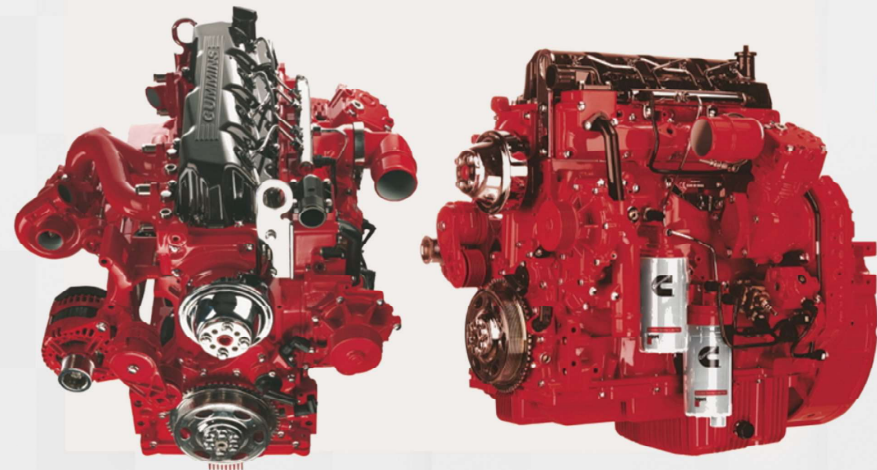
01-25

TRANSMISSION PARTS

25-25

**SUSPENSION
TRANSMISSION SYSTEM**

26-26



CORPORATE CULTURE

Mission:

Based in China,serve global customers,and make customers worry-free in the automotive aftermarket.

Values:

Customers first

Unity and cooperation

Shared responsibility

Embrace change

Ordinary people do extraordinary things

OFFICE & WAREHOUSE





Part No:	SAM40000715E3544
Part Name:	Long Block
Model:	GAZ NEXT G21A



Part No:	SPP10006508E3544
Part Name:	Block
Model:	GAZ NEXT G21A



Part No:	SPM40004291E3544
Part Name:	Cylinder Head
Model:	GAZ NEXT G21A



Part No:	SPSH0008065E3544
Part Name:	Oil pan assembly
Model:	GAZ NEXT G21A



Part No:	SPV10005706E3544
Part Name:	Flywheel housing
Model:	GAZ NEXT G21A



Part No:	SPV10005730E3544
Part Name:	Flywheel assembly
Model:	GAZ NEXT G21A



Part No:	SPM40004154E3544
Part Name:	Connecting rod
Model:	JGAZ NEXT G21A



Part No:	SPM40004169-BE3544
Part Name:	Cylinder gasket
Model:	GAZ NEXT G21A



Part No:	SPSH0007842E3544
Part Name:	Valve cover
Model:	GAZ NEXT G21A



Part No:	SPM40004486E3544
Part Name:	High-pressure oil pump timing pulley
Model:	JGAZ NEXT G21A



Part No:	SPM40004487E3544
Part Name:	Camshaft timing pulley
Model:	GAZ NEXT G21A



Part No:	SPM40004470E3544
Part Name:	Crankshaft timing pulley
Model:	GAZ NEXT G21A



Part No:	SPM40004502E3544
Part Name:	Timing cover rear cover
Model:	GAZ NEXT G21A



Part No:	SPM40004504E3544
Part Name:	Timing cover front lower cover
Model:	GAZ NEXT G21A



Part No:	SPM40004383E3544
Part Name:	Intake camshaft assembly
Model:	GAZ NEXT G21A



Part No:	SPM40004041E3544
Part Name:	Timing belt
Model:	GAZ NEXT G21A



Part No:	SPM40004042E3544
Part Name:	Timing belt tensioner
Model:	GAZ NEXT G21A



Part No:	SPM40004159E3544
Part Name:	Piston pin
Model:	GAZ NEXT G21A



Part No:	SPM40004384E3544
Part Name:	Exhaust camshaft assembly
Model:	GAZ NEXT G21A



Part No:	SPM40004643E3544
Part Name:	Crankshaft gear assembly
Model:	GAZ NEXT G21A



Part No:	SPM40004689E3544
Part Name:	Damper pulley assembly
Model:	GAZ NEXT G21A



Part No:	SPM40004160E3544
Part Name:	Piston pin retainer
Model:	GAZ NEXT G21A



Part No:	SPM40004279E3544
Part Name:	Piston assembly
Model:	GAZ NEXT G21A



Part No:	SPM40004172E3544
Part Name:	Intake valve
Model:	GAZ NEXT G21A



Part No:	SPM40004173E3544
Part Name:	Exhaust valve
Model:	GAZ NEXT G21A

Part No:	SPM40004174E3544
Part Name:	Valve spring
Model:	GAZ NEXT G21A



Part No:	SPV10001498E3544
Part Name:	Valve spring upper seat
Model:	GAZ NEXT G21A



Part No:	SPSH0008065E3544
Part Name:	Connecting rod bearing
Model:	GAZ NEXT G21A



Part No:	SPM40004153-1E3544
Part Name:	Connecting rod bearing
Model:	GAZ NEXT G21A



Part No:	SPM40005022E3544
Part Name:	Thermostat cover
Model:	GAZ NEXT G21A



Part No:	SPV10002036E3544
Part Name:	Valve spring lower seat
Model:	JGAZ NEXT G21A



Part No:	SPV10001519E3544
Part Name:	Valve lock clamp
Model:	GAZ NEXT G21A



Part No:	SPV10006715E3544
Part Name:	Clamp-vacuum pump oil return hose
Model:	GAZ NEXT G21A



Part No:	SPM40005673E3544
Part Name:	Thermostat
Model:	JGAZ NEXT G21A



Part No:	SPM40008176E3544
Part Name:	Thermostat housing assembly
Model:	GAZ NEXT G21A



Part No:	SPV10005349E3544
Part Name:	Check valve-cylinder head
Model:	GAZ NEXT G21A



Part No:	SPM40005273E3544
Part Name:	Clamp-hose to thermostat housing assembly
Model:	GAZ NEXT G21A



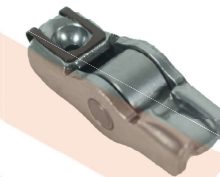
Part No:	SPM40004504E3544
Part Name:	Single ear clamp
Model:	GAZ NEXT G21A



Part No:	SPS10007011E3544
Part Name:	Clamp-oil inlet pipe to oil pipe
Model:	GAZ NEXT G21A



Part No:	SPV10001518E3544
Part Name:	Hydraulic tappet
Model:	GAZ NEXT G21A



Part No:	SPM40004179E3544
Part Name:	Roller rocker arm
Model:	GAZ NEXT G21A



Part No:	SPM40004149E3544
Part Name:	Crankshaft signal plate
Model:	GAZ NEXT G21A



Part No:	SPM40004384E3544
Part Name:	Spindle upper bearing
Model:	GAZ NEXT G21A



Part No:	SPM40004148-3E3544
Part Name:	Spindle lower bearing
Model:	GAZ NEXT G21A



Part No:	SPM40004151E3544
Part Name:	Thrust plate
Model:	GAZ NEXT G21A



Part No:	SPV10001782E3544
Part Name:	Glow plug (24V)
Model:	GAZ NEXT G21A



Part No:	SPM40004279E3544
Part Name:	Preheating control unit
Model:	GAZ NEXT G21A



Part No:	SPV10005634E3544
Part Name:	Exhaust pipe heat shield
Model:	GAZ NEXT G21A



Part No:	SPV10007117E3544
Part Name:	Turbocharger heat shield
Model:	GAZ NEXT G21A



Part No:	SPV10001902E3544
Part Name:	Oil filler cap
Model:	GAZ NEXT G21A



Part No:	SVSH0040636E3544
Part Name:	Diesel filter assembly
Model:	GAZ NEXT G21A



Part No:	SPSH0006803E3544
Part Name:	Power steering pump assembly
Model:	GAZ NEXT G21A



Part No:	SPM40004188E3544
Part Name:	Water pump assembly
Model:	GAZ NEXT G21A



Part No:	SPM40004125E3544
Part Name:	High-pressure oil pump
Model:	GAZ NEXT G21A



Part No:	SPSH0009180E3544
Part Name:	Diesel filter element
Model:	JGAZ NEXT G21A



Part No:	SPV10001519E3544
Part Name:	2.5L oil filter
Model:	GAZ NEXT G21A



Part No:	SPM40004240E3544
Part Name:	Oil filter
Model:	GAZ NEXT G21A



Part No:	SPM40004660E3544
Part Name:	Oil pump gear
Model:	JGAZ NEXT G21A



Part No:	SPV10001523E3544
Part Name:	Oil pressure switch
Model:	GAZ NEXT G21A



Part No:	SPM40004126E3544
Part Name:	Injector
Model:	GAZ NEXT G21A



Part No:	SPM40004300A7507
Part Name:	Oil filter module
Model:	GAZ NEXT G21A



Part No:	SPSH0008997E3544
Part Name:	Oil filter element
Model:	GAZ NEXT G21A



Part No:	FL111000000692A6393
Part Name:	Fuel Filter
Model:	GAZ NEXT G21A



Part No:	SPM40004965E3544
Part Name:	High-pressure oil pump connection flange
Model:	GAZ NEXT G21A



Part No:	SPM40004241E3544
Part Name:	Drive belt
Model:	GAZ NEXT G21A



Part No:	SPM40004281E3544
Part Name:	Oil dipstick assembly
Model:	GAZ NEXT G21A



Part No:	SPM40004633E3544
Part Name:	Oil filter assembly
Model:	GAZ NEXT G21A



Part No:	SPM40004148-3E3544
Part Name:	Oil pump assembly
Model:	GAZ NEXT G21A



Part No:	SPSH008977E3544
Part Name:	Power steering pump assembly
Model:	GAZ NEXT G21A



Part No:	SPM40004296E3544
Part Name:	Oil baffle
Model:	GAZ NEXT G21A



Part No:	SP80000294E3544
Part Name:	Axis bearing
Model:	GAZ NEXT G21A



Part No:	SPV10001499E3544
Part Name:	Valve oil seal
Model:	GAZ NEXT G21A



Part No:	SPM40004273E3544
Part Name:	Crankshaft rear oil seal
Model:	GAZ NEXT G21A



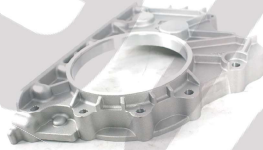
Part No:	SPM40004289E3544
Part Name:	Crankshaft front oil seal
Model:	GAZ NEXT G21A



Part No:	SPV10001781E3544
Part Name:	Exhaust camshaft oil seal
Model:	GAZ NEXT G21A



Part No:	SPM40004290E3544
Part Name:	Crankshaft front oil seal seat
Model:	JGAZ NEXT G21A



Part No:	SPV10005613E3544
Part Name:	Crankshaft rear oil seal flange
Model:	GAZ NEXT G21A



Part No:	SPM40004240E3544
Part Name:	Crankshaft position sensor
Model:	GAZ NEXT G21A



Part No:	SPM40005398E3544
Part Name:	Phase sensor
Model:	GAZ NEXT G21A



Part No:	SPSH0008997E3544
Part Name:	Coolant temperature sensor
Model:	GAZ NEXT G21A



Part No:	SPV10001538E3544
Part Name:	Intake air temperature and pressure sensor
Model:	GAZ NEXT G21A



Part No:	SPM40004284E3544
Part Name:	High-pressure oil pipe
Model:	GAZ NEXT G21A



Part No:	SPM40004285E3544
Part Name:	High-pressure oil pipe
Model:	GAZ NEXT G21A



Part No:	SPM40004286E3544
Part Name:	High-pressure oil pipe
Model:	GAZ NEXT G21A



Part No:	SPM40004287E3544
Part Name:	High-pressure oil pipe
Model:	GAZ NEXT G21A



Part No:	SPM40004409E3544
Part Name:	High-pressure oil pipe
Model:	GAZ NEXT G21A



Part No:	SPV10005723E3544
Part Name:	Vacuum pump oil return pipe
Model:	GAZ NEXT G21A



Part No:	SPV10005630E3544
Part Name:	Turbocharger oil return pipe
Model:	JGAZ NEXT G21A



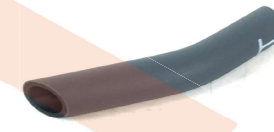
Part No:	SPV10005732E3544
Part Name:	Vacuum pump oil inlet pipe
Model:	GAZ NEXT G21A



Part No:	SPM40004407E3544
Part Name:	Injector oil return pipe assembly
Model:	GAZ NEXT G21A



Part No:	SPM40004652E3544
Part Name:	Oil module return hose
Model:	GAZ NEXT G21A



Part No:	SPSH0007819E3544
Part Name:	Crankcase ventilation hose
Model:	GAZ NEXT G21A



Part No:	SPSH0007838E3544
Part Name:	Breathing device connecting pipe assembly
Model:	GAZ NEXT G21A



Part No:	SPSH0008845E3544
Part Name:	Intake pipe
Model:	GAZ NEXT G21A



Part No:	SPSH0008874E3544
Part Name:	Exhaust manifold
Model:	GAZ NEXT G21A



Part No:	SPSH0007695E3544
Part Name:	Low-pressure fuel pipe assembly
Model:	GAZ NEXT G21A



Part No:	SPM40004127E3544
Part Name:	Oil rail
Model:	GAZ NEXT G21A



Part No:	SPM40004144E3544
Part Name:	Piston cooling nozzle assembly
Model:	GAZ NEXT G21A



Part No:	SPV10005733E3544
Part Name:	Vacuum pump oil return pipe joint
Model:	GAZ NEXT G21A



Part No:	SPM40005079E3544
Part Name:	High-pressure oil pump bracket assembly
Model:	JGAZ NEXT G21A



Part No:	SPM40005190E3544
Part Name:	Bracket-engine wiring harness
Model:	GAZ NEXT G21A



Part No:	SPM40005215E3544
Part Name:	Lubricate pin sleeve
Model:	GAZ NEXT G21A



Part No:	SPM40005383E3544
Part Name:	Bowl plug
Model:	GAZ NEXT G21A



Part No:	SPP10005337E3544
Part Name:	Bowl plug-cylinder block
Model:	GAZ NEXT G21A



Part No:	SPM40005402E3544
Part Name:	Pin shaft-front cover and water pump
Model:	GAZ NEXT G21A



Part No:	SPM40005584E3544
Part Name:	Cylindrical pin-rear oil seal flange
Model:	GAZ NEXT G21A



Part No:	SPSH0008860E3544
Part Name:	Engine wiring harness assembly
Model:	GAZ NEXT G21A



Part No:	SPSH0008994E3544
Part Name:	Generator
Model:	GAZ NEXT G21A



Part No:	SPM40004531E3544
Part Name:	Generator
Model:	GAZ NEXT G21A



Part No:	SPM40004409E3544
Part Name:	Generator bracket assembly
Model:	GAZ NEXT G21A



Part No:	SPSH0008996E3544
Part Name:	Starter
Model:	GAZ NEXT G21A



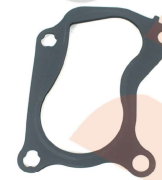
Part No:	SPSH0005945E3544
Part Name:	Starter
Model:	JGAZ NEXT G21A



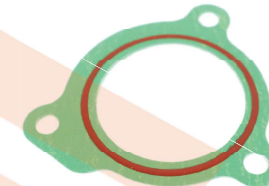
Part No:	SPM40004980E3544
Part Name:	O-ring-gear chamber
Model:	GAZ NEXT G21A



Part No:	SPM40004636E3544
Part Name:	Thermostat housing gasket
Model:	GAZ NEXT G21A



Part No:	SPM40004514E3544
Part Name:	Super-charger and exhaust pipe 1 gasket
Model:	GAZ NEXT G21A



Part No:	SPM40004546E3544
Part Name:	Intake pipe gasket
Model:	GAZ NEXT G21A



Part No:	SPM40004199E3544
Part Name:	Exhaust manifold gasket
Model:	GAZ NEXT G21A



Part No:	SPM40004700E3544
Part Name:	Idle gear gasket
Model:	GAZ NEXT G21A



Part No:	SPM40005025E3544
Part Name:	Gasket
Model:	GAZ NEXT G21A



Part No:	SPV10002375E3544
Part Name:	Super-charger return pipe gasket
Model:	GAZ NEXT G21A



Part No:	SPV10002389E3544
Part Name:	Supercharger inlet pipe gasket
Model:	GAZ NEXT G21A

Part No:	SPV10005625E3544
Part Name:	Supercharger gasket
Model:	GAZ NEXT G21A

Part No:	SPV10005792E3544
Part Name:	Vacuum pump gasket
Model:	GAZ NEXT G21A



Part No:	SPP10005385E3544
Part Name:	Bolts-high-pressure oil pump timing pulley M8 L30
Model:	GAZ NEXT G21A

Part No:	SPP10005386E3544
Part Name:	Bolts-return oil joint 2
Model:	GAZ NEXT G21A

Part No:	SPP10005389E3544
Part Name:	Bolts-oil filter assembly to oil pump assembly
Model:	GAZ NEXT G21A



Part No:	SPM40004815E3544
Part Name:	Injector seal
Model:	JGAZ NEXT G21A

Part No:	SPM40004280E3544
Part Name:	Flywheel bolt
Model:	GAZ NEXT G21A

Part No:	SPM40004372E3544
Part Name:	Cylinder head bolts
Model:	GAZ NEXT G21A



Part No:	SPP10005391E3544
Part Name:	Bolts-solenoid valve (oil pump)
Model:	JGAZ NEXT G21A

Part No:	SPV10001482E3544
Part Name:	Shock absorber pulley bolts
Model:	GAZ NEXT G21A

Part No:	SPV10002103E3544
Part Name:	Injector pressure plate bolts
Model:	GAZ NEXT G21A



Part No:	SPM40005001E3544
Part Name:	Bolts-timing belt tensioner
Model:	GAZ NEXT G21A

Part No:	SPM40005138E3544
Part Name:	Bolts-oil pump assembly to cylinder block
Model:	GAZ NEXT G21A

Part No:	SPM40005376E3544
Part Name:	Bolts-oil baffle to cylinder block
Model:	GAZ NEXT G21A



Part No:	SPV10005341E3544
Part Name:	Bolts-timing rear cover cylinder block
Model:	GAZ NEXT G21A

Part No:	SPV10005342E3544
Part Name:	Bolts-timing cover
Model:	GAZ NEXT G21A

Part No:	SPV10005375E3544
Part Name:	Bolts-EGR connecting pipe
Model:	GAZ NEXT G21A



Part No:	SPM40005524E3544
Part Name:	Bolts-rear oil seal flange
Model:	GAZ NEXT G21A

Part No:	SPM40005585E3544
Part Name:	Bolts-generator
Model:	GAZ NEXT G21A

Part No:	SPM40006430E3544
Part Name:	Bolts-oil filter assembly to oil pump assembly
Model:	GAZ NEXT G21A



Part No:	SPV10005986E3544
Part Name:	Bolts-idler assembly
Model:	GAZ NEXT G21A

Part No:	SP700002388E3544
Part Name:	Turbocharger oil inlet pipe hollow bolts
Model:	GAZ NEXT G21A

Part No:	SP700002504E3544
Part Name:	Hexagonal head flange face heat-resistant bolts
Model:	GAZ NEXT G21A



Part No:	SPM40004425E3544	Part No:	SPM40006468E3544	Part No:	5307154
Part Name:	Bolts-crankshaft timing pulley	Part Name:	Heat-resistant studs-exhaust manifold	Part Name:	Cylinder head
Model:	GAZ NEXT G21A	Model:	GAZ NEXT G21A	Model:	Cummins2.8



Part No:	5257187	Part No:	SPM40004280E3544	Part No:	5369836
Part Name:	Cylinder gasket	Part Name:	Oil pan (without hole)	Part Name:	Oil pan
Model:	Cummins2.8	Model:	Cummins2.8	Model:	Cummins2.8



Part No:	5262617	Part No:	5294397	Part No:	5264443
Part Name:	Valve cover	Part Name:	Bolts-oil pump assembly to cylinder block	Part Name:	Chain cover
Model:	Cummins2.8	Model:	Cummins2.8	Model:	Cummins2.8



Part No:	5345647	Part No:	5340588	Part No:	5261320
Part Name:	Cylinder gasket	Part Name:	Connecting rod	Part Name:	Intake valve
Model:	Cummins2.8	Model:	Cummins2.8	Model:	Cummins2.8



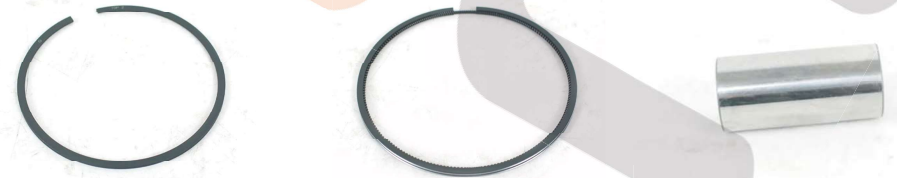
Part No:	5308265	Part No:	5308012	Part No:	4976168
Part Name:	Exhaust valve	Part Name:	Exhaust connector	Part Name:	Valve spring seat
Model:	Cummins2.8	Model:	Cummins2.8	Model:	Cummins2.8



Part No:	5307153	Part No:	5308263F	Part No:	5270336
Part Name:	Valve spring	Part Name:	Valve lock plate	Part Name:	Piston and ring assembly
Model:	Cummins2.8	Model:	Cummins2.8	Model:	Cummins2.8



Part No:	5269331	Part No:	4995266	Part No:	5269330
Part Name:	Piston and ring assembly	Part Name:	Piston	Part Name:	Piston ring
Model:	Cummins2.8	Model:	Cummins2.8	Model:	Cummins2.8



Part No:	4976252	Part No:	4976251	Part No:	5477660
Part Name:	Piston ring	Part Name:	Piston oil ring	Part Name:	Piston pin
Model:	Cummins2.8	Model:	Cummins2.8	Model:	Cummins2.8



Part No:	5272201/5311011
Part Name:	Piston pin retaining ring
Model:	Cummins2.8

Part No:	5267994
Part Name:	Camshaft
Model:	Cummins2.8

Part No:	5264231/5443207
Part Name:	Crankshaft
Model:	Cummins2.8



Part No:	5255568
Part Name:	Rocker shaft
Model:	Cummins2.8

Part No:	5262518/5295581
Part Name:	Rocker seat
Model:	Cummins2.8

Part No:	5271539
Part Name:	Rocker arm long
Model:	Cummins2.8



Part No:	5271540
Part Name:	Rocker arm
Model:	Cummins2.8

Part No:	5670418/5474752
Part Name:	Oil cooler module
Model:	Cummins2.8

Part No:	5670414/5563774/5474753
Part Name:	Cooling module assembly
Model:	Cummins2.8



Part No:	4983279
Part Name:	Oil delivery connector
Model:	Cummins2.8

Part No:	5257526
Part Name:	Piston cooling nozzle
Model:	Cummins2.8

Part No:	5318533
Part Name:	Oil cooler
Model:	Cummins2.8



Part No:	5310100/5308965/5263165
Part Name:	EGR cooler
Model:	Cummins2.8

Part No:	5308012
Part Name:	Oil dipstick
Model:	Cummins2.8

Part No:	5266781/5318120
Part Name:	Generator
Model:	Cummins2.8



Part No:	5713487
Part Name:	Starter motor
Model:	Cummins2.8

Part No:	5370734
Part Name:	Supercharger
Model:	Cummins2.8

Part No:	5282085
Part Name:	Vacuum pump
Model:	Cummins2.8



Part No:	5333148
Part Name:	Water pump
Model:	Cummins2.8

Part No:	5270739
Part Name:	Vane pump
Model:	Cummins2.8

Part No:	5286672
Part Name:	Hydraulic pump
Model:	Cummins2.8



Part No:	5269358
Part Name:	Flywheel
Model:	Cummins2.8

Part No:	5338237
Part Name:	Flywheel
Model:	Cummins2.8

Part No:	5305218F
Part Name:	Crankshaft signal wheel
Model:	Cummins2.8



Part No:	5664695
Part Name:	Drive sprocket
Model:	Cummins2.8

Part No:	5664697
Part Name:	Camshaft sprocket
Model:	Cummins2.8

Part No:	5262500
Part Name:	Belt tensioner
Model:	Cummins2.8



Part No:	5312821
Part Name:	Fan belt 8PK2166
Model:	Cummins2.8

Part No:	5270378
Part Name:	Fan bracket
Model:	Cummins2.8

Part No:	4996250
Part Name:	Upper main bearing
Model:	Cummins2.8



Part No:	4946030
Part Name:	Lower main bearing
Model:	Cummins2.8

Part No:	5340182
Part Name:	Connecting rod bearing
Model:	Cummins2.8

Part No:	5255321
Part Name:	Camshaft thrust bearing
Model:	Cummins2.8



Part No:	5263946
Part Name:	Connecting rod bearing
Model:	Cummins2.8

Part No:	4946031
Part Name:	Intermediate thrust bearing
Model:	Cummins2.8

Part No:	5258983
Part Name:	High pressure oil pipe
Model:	Cummins2.8



Part No:	5342941
Part Name:	Pipe
Model:	Cummins2.8

Part No:	5265278
Part Name:	Small circulation pipe
Model:	Cummins2.8

Part No:	5340176
Part Name:	Supercharger return oil pipe
Model:	Cummins2.8



Part No:	4988653
Part Name:	Exhaust manifold
Model:	Cummins2.8

Part No:	5311135
Part Name:	Exhaust manifold
Model:	Cummins2.8

Part No:	5265285
Part Name:	Water outlet pipe
Model:	Cummins2.8



Part No:	5261049
Part Name:	Breathing pipe
Model:	Cummins2.8

Part No:	5338751/4976170
Part Name:	Valve oil seal
Model:	Cummins2.8

Part No:	5265266
Part Name:	Crankshaft front oil seal
Model:	Cummins2.8



Part No:	5269358
Part Name:	Crankshaft rear oil seal
Model:	Cummins2.8

Part No:	5265267
Part Name:	Crankshaft rear oil seal
Model:	Cummins2.8

Part No:	4982040F
Part Name:	Chain
Model:	Cummins2.8



Part No:	5259767
Part Name:	Chain guide (narrow)
Model:	Cummins2.8

Part No:	5267973
Part Name:	Chain guide (wide)
Model:	Cummins2.8

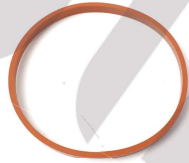
Part No:	5313844
Part Name:	Cover seat ring
Model:	Cummins2.8



Part No:	5263530
Part Name:	Gear chamber gasket
Model:	Cummins2.8

Part No:	5262030
Part Name:	Friction enhancing gasket
Model:	Cummins2.8

Part No:	5254612
Part Name:	Oil pan gasket
Model:	Cummins2.8



Part No:	4995185
Part Name:	D-type sealing ring
Model:	Cummins2.8

Part No:	5254215
Part Name:	O-ring sealing ring
Model:	Cummins2.8

Part No:	5264426
Part Name:	Vacuum pump gasket
Model:	Cummins2.8



Part No:	5255567
Part Name:	Mounting gasket
Model:	Cummins2.8

Part No:	3934638
Part Name:	Supercharger gasket
Model:	Cummins2.8

Part No:	5255312
Part Name:	Valve chamber gasket
Model:	Cummins2.8



Part No:	5291706
Part Name:	Sealing gasket
Model:	Cummins2.8

Part No:	5348889
Part Name:	Exhaust elbow gasket
Model:	Cummins2.8

Part No:	5361694
Part Name:	Gear chamber gasket
Model:	Cummins2.8



Part No:	5255313
Part Name:	Seal
Model:	Cummins2.8

Part No:	3035177
Part Name:	Flat gasket
Model:	Cummins2.8

Part No:	5255538
Part Name:	Exhaust pipe gasket
Model:	Cummins2.8



Part No:	5273045
Part Name:	Sealing gasket
Model:	Cummins2.8

Part No:	5265277
Part Name:	O-ring sealing ring
Model:	Cummins2.8

Part No:	5266796
Part Name:	O-ring sealing ring
Model:	Cummins2.8



Part No:	3900955F
Part Name:	Bowl plug 10mm
Model:	Cummins2.8

Part No:	3900956F
Part Name:	Bowl plug 18mm
Model:	Cummins2.8

Part No:	3678611/S3678611AA2080
Part Name:	Tube screw plug
Model:	Cummins2.8



Part No:	5261340
Part Name:	Valve bridge
Model:	Cummins2.8

Part No:	5313379
Part Name:	Engine wiring harness
Model:	Cummins2.8

Part No:	4898590
Part Name:	Tube clamp
Model:	Cummins2.8



Part No:	4990384
Part Name:	Plywood
Model:	Cummins2.8

Part No:	3949326
Part Name:	Locking ring
Model:	Cummins2.8

Part No:	3900631
Part Name:	Hexagonal flange bolt (M8*1.25*25)
Model:	Cummins2.8



Part No:	3902116
Part Name:	Hexagonal flange bolt
Model:	Cummins2.8

Part No:	5348889
Part Name:	Hexagonal flange bolt
Model:	Cummins2.8

Part No:	5361694
Part Name:	Hexagonal flange bolt
Model:	Cummins2.8



Part No:	3914407
Part Name:	Bolt
Model:	Cummins2.8

Part No:	3093926
Part Name:	Exhaust branch pipe bolt
Model:	Cummins2.8

Part No:	5267327
Part Name:	Bolt
Model:	Cummins2.8



Part No:	5263530
Part Name:	Hexagon flange bolt
Model:	Cummins2.8

Part No:	3900626
Part Name:	Hexagon flange bolt
Model:	Cummins2.8

Part No:	3925402
Part Name:	Hexagon flange bolt
Model:	Cummins2.8



Part No:	3925883
Part Name:	Hexagon flange bolt
Model:	Cummins2.8

Part No:	3927948
Part Name:	Anti-fracture bolt
Model:	Cummins2.8

Part No:	3929755
Part Name:	Supercharger stud bolt
Model:	Cummins2.8



Part No:	4990385
Part Name:	Hexagon flange bolt
Model:	Cummins2.8

Part No:	3900627
Part Name:	Hexagon flange bolt
Model:	Cummins2.8

Part No:	4942710
Part Name:	Combination bolt with washer
Model:	Cummins2.8



Part No:	3900955F
Part Name:	Step stop bolt
Model:	Cummins2.8

Part No:	5263944
Part Name:	Connecting rod bolt
Model:	Cummins2.8

Part No:	3864113
Part Name:	Bolt
Model:	Cummins2.8



Part No:	5368306
Part Name:	Hexagon flange bolt
Model:	Cummins2.8

Part No:	4895877
Part Name:	Bolt
Model:	Cummins2.8

Part No:	4898482
Part Name:	Hexagon bolt
Model:	Cummins2.8



Part No:	5255538
Part Name:	Exhaust pipe gasket
Model:	Cummins3.8

Part No:	5338751/4976170
Part Name:	Valve oil seal
Model:	Cummins3.8

Part No:	4995185
Part Name:	D-type sealing ring
Model:	Cummins3.8



Part No:	4940117
Part Name:	Hexagon flange bolt
Model:	Cummins2.8

Part No:	5257728
Part Name:	Hexagon flange bolt
Model:	Cummins2.8

Part No:	5312821
Part Name:	Fan belt 8PK2166
Model:	Cummins3.8



Part No:	5270760
Part Name:	Oil dipstick
Model:	Cummins3.8

Part No:	5308012
Part Name:	Exhaust connector
Model:	Cummins3.8

Part No:	3903652
Part Name:	V-type clamp -Exhaust outlet
Model:	Cummins3.8



Part No:	5310100/5308965/5263165
Part Name:	EGR cooler
Model:	Cummins3.8

Part No:	5270739
Part Name:	Vane pump
Model:	Cummins3.8

Part No:	5286672
Part Name:	Hydraulic pump
Model:	Cummins3.8



Part No:	3925402
Part Name:	Hexagonal flange bolt
Model:	Cummins3.8

Part No:	3925883
Part Name:	Hexagonal flange bolt
Model:	Cummins3.8

Part No:	3900635
Part Name:	Hexagonal head bolt
Model:	Cummins3.8



Part No:	3974030F
Part Name:	V-diamond belt
Model:	Cummins3.8

Part No:	3900956F
Part Name:	Bowl plug 18mm
Model:	Cummins3.8

Part No:	4898590
Part Name:	Pipe clamp
Model:	Cummins3.8



Part No:	3927948
Part Name:	Anti-fracture bolt
Model:	Cummins3.8

Part No:	3929755
Part Name:	Stud supercharger stud bolt
Model:	Cummins3.8

Part No:	3900630
Part Name:	Hexagonal flange bolt
Model:	Cummins3.8



Part No:	3900631
Part Name:	Hexagonal flange bolt (MS#1.25*25)
Model:	Cummins3.8

Part No:	4895877
Part Name:	Hexagonal head bolt
Model:	Cummins3.8

Part No:	4898482
Part Name:	Hexagonal bolt
Model:	Cummins3.8



Part No:	3093926
Part Name:	Exhaust branch pipe bolt
Model:	Cummins3.8

Part No:	3913638
Part Name:	Hexagonal flange bolt
Model:	Cummins3.8



Part No:	5254598/5309066
Part Name:	Idler (large)
Model:	Cummins2.8

Part No:	5254599
Part Name:	Idler (small)
Model:	Cummins2.8

Part No:	5272961
Part Name:	Idler
Model:	Cummins2.8



Part No:	SPM40004709E3544
Part Name:	Exhaust pipe gasket
Model:	GAZelle NEXT

Part No:	SPM40005154E3544
Part Name:	Accessory idler 2
Model:	GAZelle NEXT

Part No:	SPM40005155E3544
Part Name:	Accessory idler 1
Model:	GAZelle NEXT



Part No:	SPV10005600E3544
Part Name:	Idler assembly
Model:	GAZelle NEXT

Part No:	SPM40008431E3544
Part Name:	Idler bolt assembly
Model:	GAZelle NEXT

Part No:	SS700000118E3544
Part Name:	Hexagonal head flange face bolts M10 L55
Model:	GAZelle NEXT



Part No:	SS700000119E3544
Part Name:	Hexagonal head flange face bolts M8 L25
Model:	GAZelle NEXT

Part No:	SS700001202E3544
Part Name:	Hexagonal head flange face bolts M12 L45
Model:	GAZelle NEXT

Part No:	SSPM0001091E3544
Part Name:	Hexagonal flange bolt M8 L35
Model:	GAZelle NEXT



Part No:	SPP10006108E3544
Part Name:	Hexagonal flange bolt M8 L25
Model:	GAZelle NEXT